

4

3

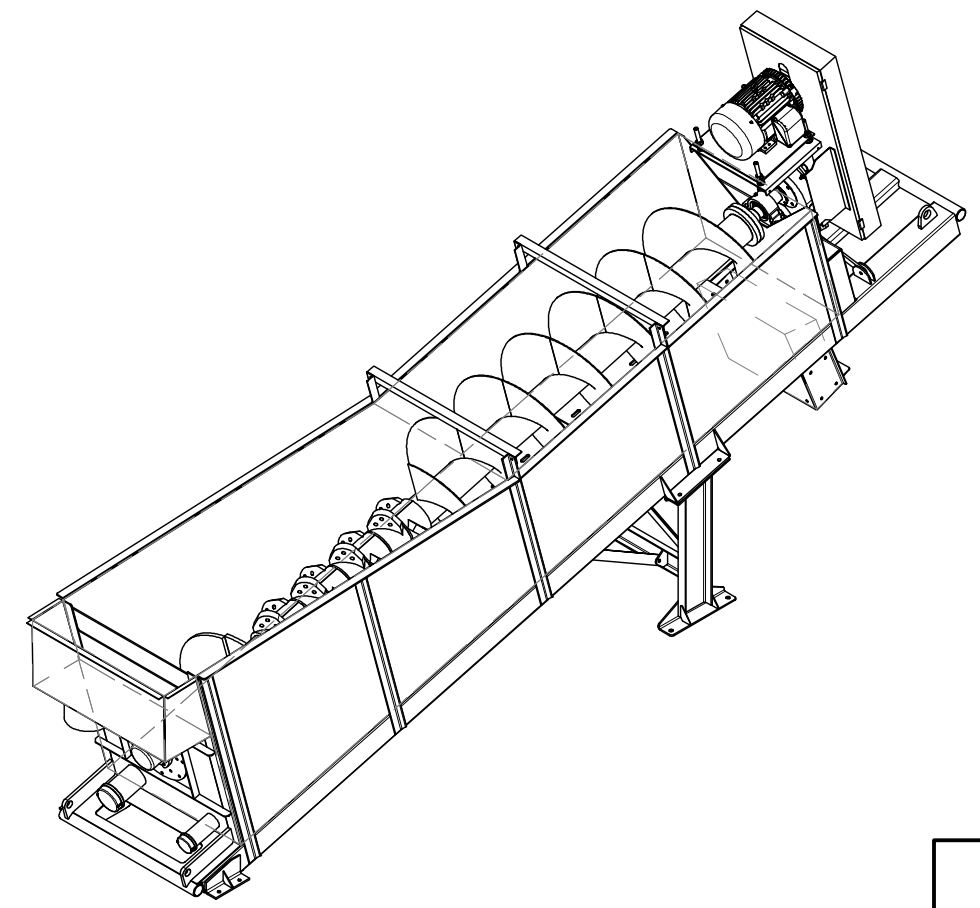
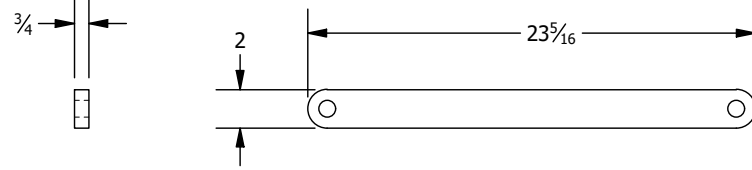
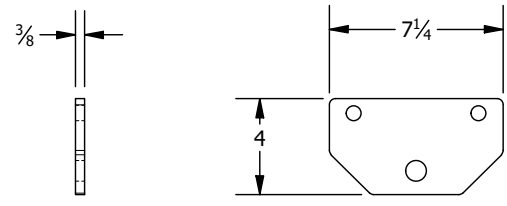
2

1

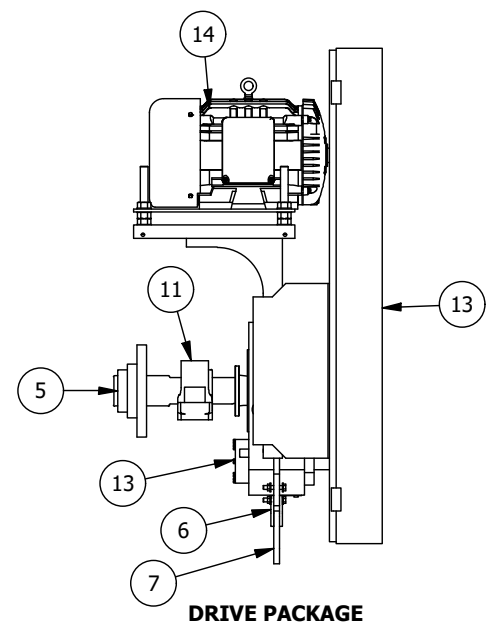
PARTS LIST				
ITEM	PART NUMBER	QTY	TITLE	DESCRIPTION
1	4882-100	1	TUB	WELDMENT
2	4882-200	1	SCREW RH	WELDMENT
3	4882-300	1	CHUTE	WELDMENT
4	4882-400	1	STAND	WELDMENT
5	4882-500	1	HEAD SHAFT	WELDMENT
6	4882-000-01	2	PLATE	7-1/4 X 3-1/4 X 3/8
7	4882-000-02	1	PLATE	25-3/8 X 2 X 3/4
8	CHAIN	1	CHAIN	PURCHASED
9	4" STD PIPE CAP	1	CAP	PURCHASED
10	6" STD PIPE CAP	1	CAP	PURCHASED
11	071445	1	3-7/16 S-2000E	PUCHASED
12	OUTBOARD BEARING	1	BEARING	PURCHASED
13	T2T63BFBM301324T41.4	1	T2T63BFBM301324T41.4	PUCHASED
14	EM4104T	1	MOTOR	30HP 1760RPM 286T

PART NUMBER	TITLE	DESCRIPTION
4882-000-01	PLATE	7-1/4 X 3-1/4 X 3/8

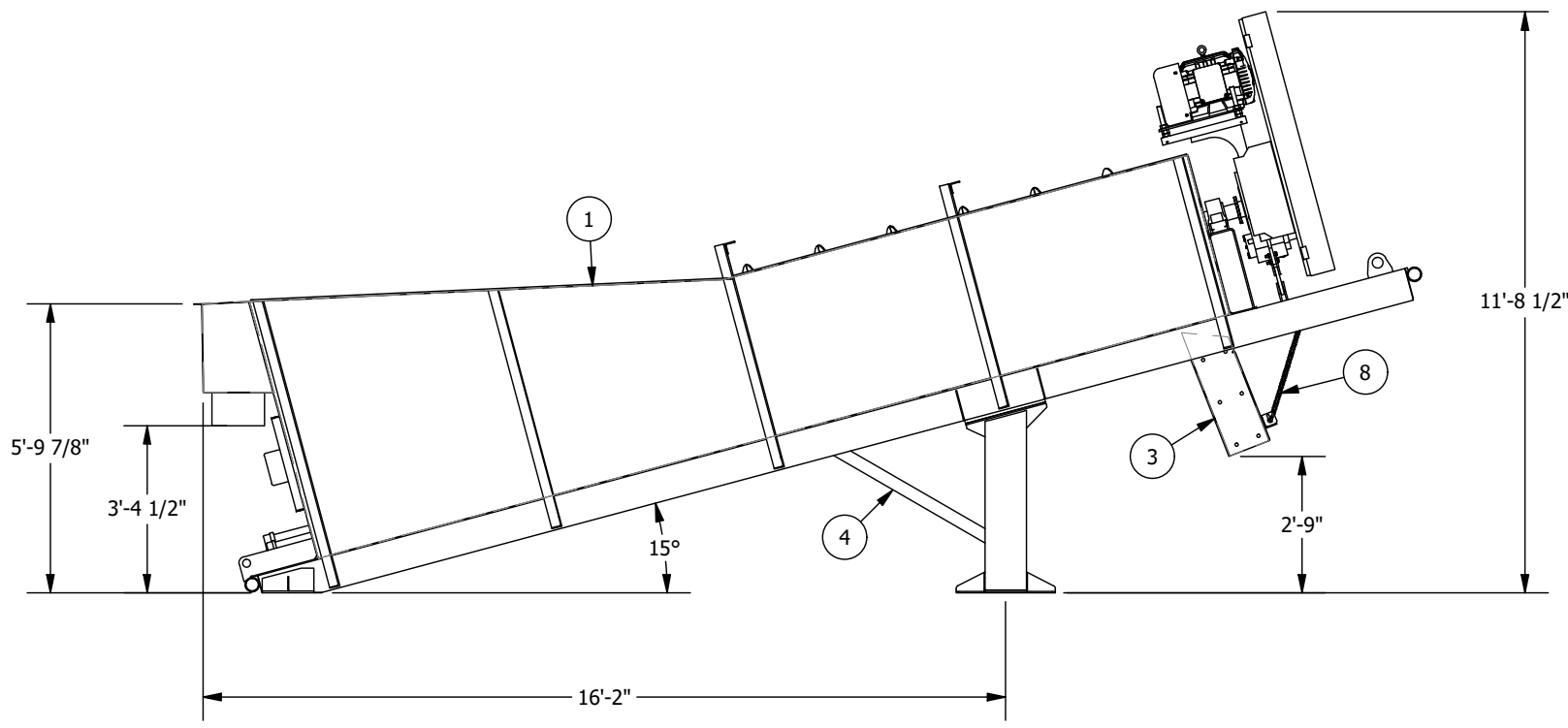
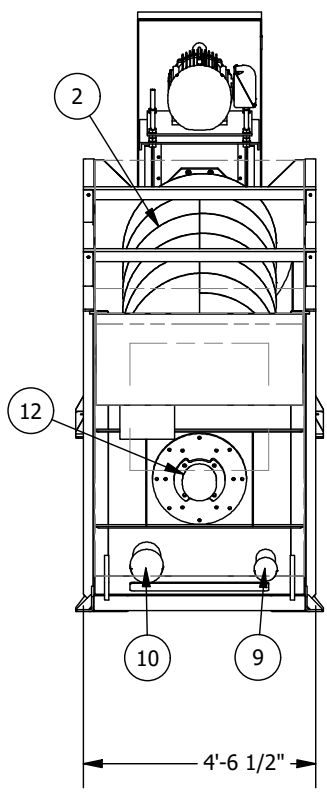
PART NUMBER	TITLE	DESCRIPTION
4882-000-02	PLATE	25-3/8 X 2 X 3/4



QTY 2 REQ
QTY 1 FOR 4882
QTY 1 FOR 4883



DRIVE PACKAGE



36 X 19 COURSE WASHER ASSEMBLY	DWG #: 4882-000
P.O. BOX 306 WALNUT, IL 61376 (815) 379-2090	
DETAIL: SAS	
DESIGN: SAS	
N/A	
SIZE: B	
SHEET: 1 OF 1	
DATE: 8/6/2020	

C

C

B

B

A

A

4

3

2

1